



Apartment

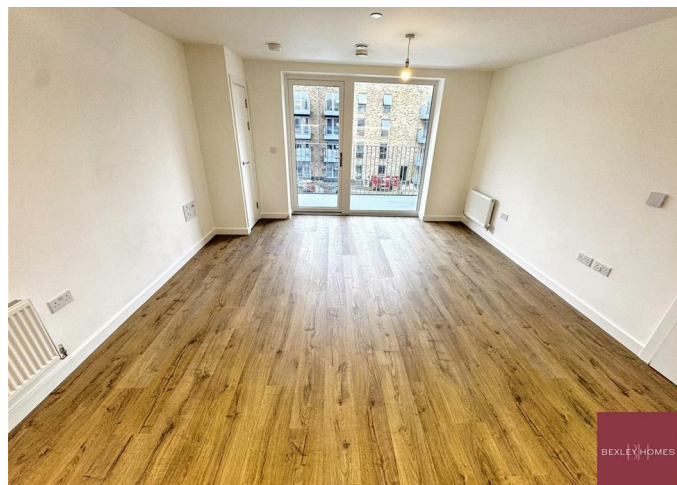
192 LIBERTY COURT, DARTFORD, STONE CROSSING, DA2

Per Month

£1,950

FEATURES

- Brand new 2bed/2bath
- Private balcony
- Residents-only gym
- One allocated parking
- Open-plan kitchen/living space
- Ample storage throughout
- On-site work hub / co-working space



BEXLEY HOMES

2 Bedroom Apartment located in Dartford, Stone Crossing

Brand New 2 Bedroom, 2 Bathroom Apartment – Liberty Court, Stone Crossing, Dartford

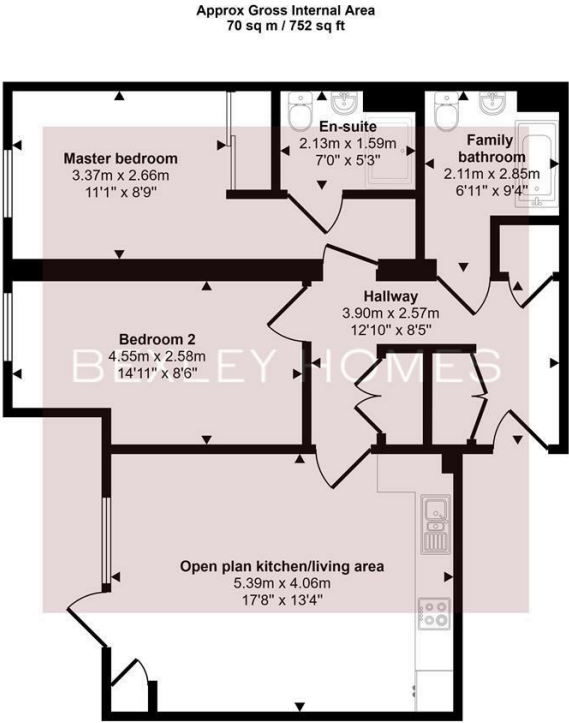
The property features a bright and spacious open-plan kitchen and living area, with doors leading directly onto a private balcony – perfect for relaxing in the summer days. The contemporary kitchen is fitted with high-end integrated appliances and comes complete with all white goods, including a dishwasher, offering both convenience and quality.

The master bedroom benefits from fitted wardrobes and a private en-suite shower room. The second bedroom is generously proportioned, making it ideal as a double bedroom, guest room or home office. A modern family bathroom serves the second bedroom and visitors. Additionally, the property benefits from one allocated parking space, with visitor parking also available.

Residents of Liberty Court enjoy exclusive access to an on-site gym and dedicated work hub. The residents' gym provides the convenience of keeping fit

Call us on
01322 948500
Belvedere@bexleyhomes.co.uk
www.bexleyhomes.co.uk

Council Tax Band
New Build



Floorplan

This floorplan is only for illustrative purposes and is not to scale. Measurements of rooms, doors, windows, and any items are approximate and no responsibility is taken for any error, omission or mis-statement. Icons of items such as bathroom suites are representations only and may not look like the real items. Made with Made Snappy 360.

Energy Efficiency Rating		
	Current	Potential
Very energy efficient - lower running costs		
(92 plus) A		
(81-91) B		
(69-80) C		
(55-68) D		
(39-54) E		
(21-38) F		
(1-20) G		
Not energy efficient - higher running costs		
England & Wales		EU Directive 2002/91/EC

Agents Note: Whilst every care has been taken to prepare these particulars, they are for guidance purposes only. All measurements are approximate and are for general guidance purposes only and whilst every care has been taken to ensure their accuracy, they should not be relied upon and potential buyers are advised to recheck the measurements.

